

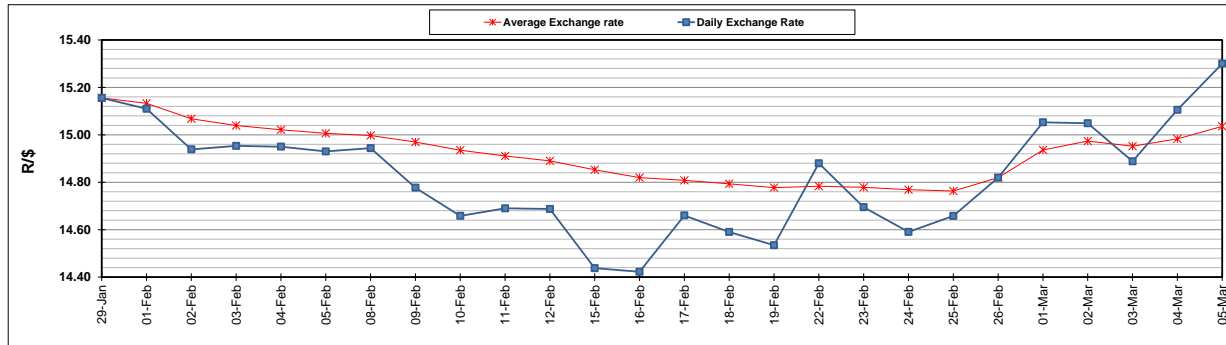
	PETROL 95 ULP	PETROL 93 ULP & LRP	DIESEL 0.05%	DIESEL 0.005%	ILL. PAR.
GAUTENG PUMP PRICE (SA c/l) AS FROM 03/03/2021	1,632.000	1,615.000	-	-	-
WHOLESALE PRICE (SA c/l) AS FROM 03/03/2021	-	-	1,412.420	1,416.820	845.688
SINGLE NATIONAL MAXIMUM RETAIL PRICE	-	-	-	-	1,071.000
BASIC FUEL PRICE - 05/03/2021 (SA c/l)	753.330	742.965	727.921	730.482	703.606
PRESS RELEASE CONTRIBUTION TO BFP 03/03/2021 - 05/03/2021 (SA c/l)	665.170	658.170	653.630	658.030	633.128
UNIT OVER/(UNDER) RECOVERY - 05/03/2021 (SA c/l)	(88.160)	(84.795)	(74.291)	(72.452)	(70.478)
AVERAGE BASIC FUEL PRICE 26/02/2021 - 05/03/2021	718.332	708.583	692.008	695.193	669.585
AVERAGE UNIT OVER/(UNDER) RECOVERY 26/02/2021 - 05/03/2021	(85.662)	(82.913)	(65.378)	(65.163)	(59.957)

### ANALYSIS MOVEMENT OF AVERAGE OVER/(UNDER) RECOVERY

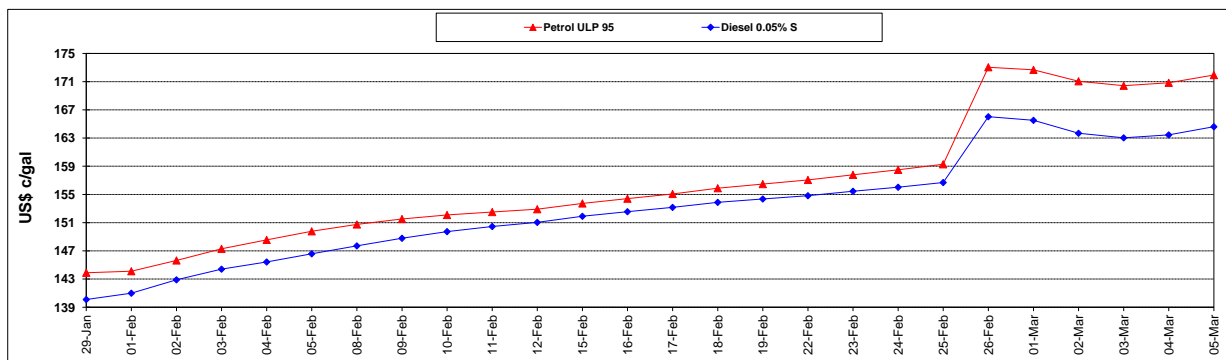
	PETROL 95	PETROL 93	DIESEL 0.05%	DIESEL 0.005%	ILL. PAR.
- MOVEMENT IN INTERNATIONAL PRODUCT PRICES	(72.634)	(70.062)	(52.827)	(52.554)	(47.813)
- MOVEMENT IN EXCHANGE RATE	(13.028)	(12.851)	(12.551)	(12.609)	(12.144)
AVERAGE UNIT OVER/(UNDER) RECOVERY 26/02/2021 - 05/03/2021	(85.662)	(82.913)	(65.378)	(65.163)	(59.957)

### R/\$ EXCHANGE RATE - (R/\$15.3000 - 05/03/2021)

#### EXCHANGE RATE USED IN BASIC FUEL PRICE



#### INTERNATIONAL PRODUCT PRICES OF BASKET USED IN BASIC FUEL PRICE



#### BASIC FUEL PRICE IN SA CENTS PER LITRE

